



WASHBURN

Heritage Centre

www.washburnvalley.org



Annual Report 2016

Introduction

Welcome to our fifth annual report. We hope that you find it informative and that it gives you a picture of how and why we do things. If you have any comments – good or bad - or indeed questions, please do not hesitate to get in touch.

The Washburn Heritage Centre (WHC), after six years of careful planning, fundraising and construction, was opened to the public in February 2011. Its aims are to:

increase the opportunities for people to care for, learn about and be involved in the unique heritage of the Washburn Valley

contribute to the fabric of the community by establishing new services, developing community networks, increasing pride and enabling responsibility.

The core values which underpin these aims are:

respect for heritage and the environment

fostering community responsibility

promoting lifelong learning for all

valuing ourselves and each other

striving for excellence in all we do.

The Centre had a very successful first year which was confirmed by a positive independent evaluation commissioned from Kendall Greene Associates. In year 2 we completed our own evaluation, and then in Year 3 HLF required us to have an external evaluation to enable us to claim our final portion of HLF grant.

The general comments we have received in 2016 confirm that we still seem to be doing a good job, and that the Washburn Heritage Centre continues to be a place where people want to visit and volunteer.

This annual report provides details of the workings of the Centre and its programme in 2016, its sixth year of operation.

1 Management

The Fewston with Blubberhouses Parochial Church Council (PCC) is the accountable body for the WHC, and the Washburn Heritage Centre Management Committee (WHCMC), a subcommittee of the PCC, manages the Centre on its behalf.

The WHCMC has had the following members who were approved at the Annual Church Vestry meeting in 2016. The WHCMC meets monthly; however a great deal of work does go on outside of these meetings. To make sure that we share the load, all members of the WHCMC take a different lead role in the many elements required to manage and operate the Centre.

Pat Anderson Church warden Archive

Ian Bergel Treasurer

Cheri Beaumont Church warden ex officio

Rebecca Campbell	Chair of the Washburn Society to April 2016	Membership
John Charman	Health and Safety	
Tom Cox	Premises and maintenance	
John Crowther	Publicity and Marketing	
Janet Fox	Secretary	Archive
Simon Hill	Design and branding	
Philip Livesey	Resigned August 2016	
Robin Noakes	Temporary exhibitions	
Clive Robinson	Events programme	
Sally Robinson	Chair	Fewston Assemblage Strategy and Volunteers
Elaine Stead	Data and management information	

2 The Church and the Centre

Our two church wardens, Pat Anderson and Cheri Beaumont, both sit on the Centre Management Committee. They also sit on the PCC, as do three other members of the Management Committee (Rebecca Campbell, John Charman and Sally Robinson). This gives sufficient co-ordination and cross-over to ensure that the Centre and Church work in partnership with each other, making the most of the opportunities and facilities available. In addition to providing refreshments after Church services, the Centre has enabled the PCC to continue to promote Fewston Church and to reach out to the wider community in new and creative ways.

The *Music at Fewston* programme has been particularly successful in 2016, with a variety of concerts catering for many different musical tastes. These have included the Leeds Central Band of the Salvation Army, the Pinsuti choir, Harrogate St Mark's choir and Ilkley St Margaret's Choir; and we hosted another concert for Ripon International Festival – a full house appreciated 'Duo Diez', a sensational Spanish duo.

The Centre facilities enable a popular monthly community lunch to take place where people from across the United Benefice and further afield meet for a 2-course lunch in friendly and accessible surroundings. Teddy Church, for babies, young children and their carers, is equally popular, and also happens in the Centre on a monthly basis..

The annual 'Journey to Bethlehem,' which takes place on Christmas Eve, saw 50+ excited children using the Centre as a dressing room. They became traditional Nativity characters - kings, shepherds, cows, angels, lambs and donkeys - processing into church with a real live donkey to join their families.

3 Priorities for 2016

In 2015 we decided that, rather than planning from year to year, it made sense to look further into the future. So over a period of months we developed and agreed a 5 year plan. The plan identifies priorities we wanted to achieve in 2016, but also indicates how we see the Centre developing beyond this point.

The agreed priorities for 2016/7 were

- Complete the Fewston Assemblage project
- Implement the agreed changes to the car park
- Install permanent external signage
- Review the role of the Washburn Society
- Complete the joint capital project with the PCC
- Produce new promotional Centre literature
- Redecorate internally and reseal the external woodwork

The priorities beyond 2016/7 are

- Refresh the permanent exhibition in Church
- Continue to care for the Centre through a planned maintenance programme
- Agree another joint capital project with the PCC which will enhance the attractiveness of the whole site
- Consider increasing the number of paid staff, if affordable
- Increase use of merchandising eg napkins, pens
- Create site storage for tools and equipment
- Replace existing chairs and tables

We are very happy to report that all the 2016 priorities were achieved – some are explained in more detail later in this report. We hope you agree that they have all had a positive effect on the workings of the Centre.

4 Finance

In 2016 we invested a considerable amount into the equipment and fabric of the Centre, to achieve some of the priorities we had set ourselves. To illustrate this, here are a few examples of what some of the items cost:

Car park alterations	£8,500
New computer equipment	£3,357

Scanning the 2,000 heritage photographs for the archive £2,000

Dishwasher (deposit) £1,582

Internal and external decorating £1,414

Additional freezer £582

We knew that 2016 was going to be expensive and we budgeted for a loss of £13,455. The actual result was a loss of £6,621 though some £5,500 of the costs expected in 2016 have fallen over into 2017. However, this still means that we were within budget with a total loss of £12,121 against an expected loss of £13,455.

This performance was helped by the Tea Room, Events and Room Hire, which all exceeded their budget, giving us an extra income of £3,300.

While Tea Room expenses have continued to be about 20% of income, we note that Event costs have increased from 31% in 2015 to 38% in 2016. This increase will partly be due to the type of event run but is something that we are already focussing on for 2017, to help us keep within budget.

Membership subscriptions have again reduced slightly, from £3,675 in 2014 to £3,450 in 2015 and £3,380 in 2016. This is another major focus for 2017.

Our cash balances remain healthy. We ended 2016 with £79,453 in the bank. Of this £25,000 relates to Heritage Grant money committed to being spent on the Fewston Assemblage Project, so that leaves us with £54,000.

Our budget for 2017 is for another excess of Expenditure over Income at £12,000. This includes the £5,500 of costs carried over from 2016, and we have included a sum of £8,000 for a joint project with the church. Should we achieve this budget we will end the year with c £42,000 in the bank which is above our reserves threshold of £40,000. This reserve was based upon professional advice. It does mean, of course, that future large projects will be limited unless we can generate more income.

The Fewston Assemblage project is almost complete, and as at 31 December 2016 expenditure of £51,000 has been incurred, with another £25,000 to spend as mentioned above. This project will be completed by the end of April 2017.

The 2016 income and expenditure report is attached at appendix 1.

Washburn Heritage Trading

Washburn Heritage Trading Ltd (Company number 8180741) was registered at Companies House on 15 August 2012. It has one share and that is held by the PCC. The Company Directors are Pat Anderson, and Sally Robinson. Philip Livesey resigned during the year as a Director and Company Secretary. We are very grateful to Philip for all he did to establish the Company and his contribution to the success of the centre.

We have appointed our auditors (Walker Broadbent) to act as Company Secretary. Ian Bergel is the Company Treasurer and the Annual Report to Companies House was filed online and on time.

None of the directors are remunerated and no expenses are claimed.

5 Our volunteers

What a great bunch of folk they are! In 2016 we had 91 people who enthusiastically committed themselves to helping manage and run the Centre. It goes without saying that if there wasn't this group, the WHC would cease to exist.

We have volunteers who bake, plan exhibitions, lead walks, host external bookings, give talks, meet and greet ...and so it goes on. It seems that there are opportunities for a wide range of people, including some who travel from Knaresborough, Addingham, Rawdon and Otley as well as those who live more locally.

The full details of our volunteer teams are attached at appendix 2.

6 The Washburn Society

Although 2016 was a year of significant change for the Washburn Society, it's fair to say that the change was probably not noticed by most of our members. That's because the Washburn Society was dissolved, but we all automatically became known as members of the Washburn Heritage Centre.

From the beginning in 2011 the Washburn Society was the membership organization of the Washburn Heritage Centre, with its own separate identity. Through it people could support the WHC, express their interest in heritage and help to put on the themed programmes of events and exhibitions. For the next five years the Washburn Society Committee and its programme planning groups met regularly with responsibility for planning the programmes, exhibitions and members' events, whilst the Washburn Heritage Centre Management Committee met to deal with all the other aspects of running the Centre, such as the premises, the Heritage Centre Co-ordinator, tearoom, hire of the facilities, the archive, oral history, the grant funding etc.

In the end our experience was that it was more confusing than helpful for our members' organisation to have a separate identity. People didn't readily understand the difference between the two names. In addition, it became clear that we could use our volunteers' time more efficiently by reducing the number of meetings as much as possible. In reality, the work of the Washburn Society Committee could be shared between the WHC Management Committee and the ad hoc programme planning groups which are formed about three times a year to create the particular themed programmes.

Discussion in the WHC Management Committee and a process of informal consultation showed that there was general agreement for the change to take place. By a resolution at the AGM on 19th March 2016 the Washburn Society was dissolved on 31st March 2016. The change has simplified our structure and procedures. The former Washburn Society Committee no longer exists. The former responsibilities of that committee are now fulfilled by the WHCMC, which was strengthened by the addition of Clive Robinson and Robin Noakes with special responsibility for the programme and the temporary exhibitions. Rebecca Campbell remains on WHCMC with responsibility for membership matters.

The number of members during 2016 varied from about 340 to 360. Members continued to benefit from reduced prices for attending events, and from invitations to the previews of each exhibition. The last Annual General Meeting of the Washburn Society was addressed by Professor Dianna Bowles OBE, who entertained us with her amusing reflections on Herdwick sheep.

7 Management Information

Our mature data systems manage bookings for events, membership enrolment and renewals, and allow the Management Committee to receive reports to inform their decisions. These systems are invaluable as they save the co-ordinator time and we can target our publicity when needed.

During the year we have upgraded our hardware with new laptops, routers and backup systems so that we are more robust in our working and data security.

8 Premises and equipment

The Centre is still a surprise to first-time visitors, who almost universally admire its design and the high quality of the building and its equipment. It is important for us to maintain it to as high a standard as possible, which does bring certain challenges.

Much routine maintenance has been done on an in-house DIY basis, and we are grateful to Graham Hebblethwaite who has willingly helped with electrical work.

In May the walls and ceiling of the Centre were repainted, and the woodwork was resealed inside and out. During the year we have replaced the noisy hand driers in the toilets with paper towels, which many organisations are changing to on the grounds of hygiene. And in the kitchen, the high-speed dishwasher was beginning to show its age, so a replacement model with a commercial specification was bought and installed.

But the main item to report is the extending and improving of the car park. This was adopted as the 2016 joint capital project to benefit both the church and the Centre. After much careful planning, we got permission from Yorkshire Water, from whom the PCC rents the car park space, to widen and reshape the entrance and to increase capacity by removing the top section of the little-used disabled access path and re-routing it. Houldsworths of Otley, did the work, which came in under budget, and the AONB volunteer walling team saved us a 4-figure sum by rebuilding a low dry stone wall. In addition, Tom Cox installed some guide posts to indicate parking spaces. The general result is a considerable improvement: more parking spaces, more room to manoeuvre, and the whole area looks much smarter.

Before the car park work started, the PCC had an ash tree felled which had pushed over a length of the churchyard wall, and which posed a potential danger to the Centre and its users if it were to fall in that direction. Once the car park was finished, new signs were installed in 3 places. Two of them have frames for up-to-date notices.

9 Heritage Development

It is easy to think that the Centre is mainly about the tea-room and the amazing array of home-made cakes. The tearoom is indeed vital to our operation as it produces the majority of the income to pay the bills. It also attracts people to our exhibitions and events programmes – and many of our volunteers first come to the centre as tea-room visitors.

However we know that one of our principle aims is to -

increase the opportunities for people to care for, learn about and be involved in the unique heritage of the Washburn Valley

and this is why we received a grant from the Heritage Lottery Fund. We achieve this aim through the following activities.

Programme of events and exhibitions

In 2016 we again offered a range of walks, talks, workshops, suppers and music – and this year the themes they reflected were: The Washburn Valley in Winter and Spring (the last two in our Four Seasons series); The Shaping of the Valley; and finally we showcased the King Street Workshops from Pateley Bridge. Our events programme had just under 1,000 attendances.

Here are some highlights from the four programmes of events:

- **Winter** Birds of the Valley was a seasonal update on local and migratory birds;

Songs from Pub and Parlour in the 1890s were performed by The Fewston Musick, led by volunteer, Ken Fackrell;

and at the other end of the musical scale, Isabelle Chousmer-Kerr and Max Gregory gave a recital of Chansons d'Amour for Valentine's Day;

- **Spring** brought Lambing Live at Scaife Hall Farm;

Trevor Backhouse anticipated Easter with a chocolate-flavoured history of his Patisserie Viennoise in Otley; and we marked the Queen's 90th birthday with a red, white and blue British supper.

- We learned about **the Shaping of the Valley** by ice, water and human intervention in talks about geology, lead-mining and environmental improvement;

and guided walks took us to Pockstones Moor, Timble Gill Beck and the sites of the Greenhow lead mines.

- Our final theme of the year featured artists, designers and makers from **King Street Workshops** in Pateley Bridge:

Jewellery in titanium, silver and gold by Debbie Moxon and Ian Simm;

Hens, ducks and pheasants emerged from Chris Moss's wire workshop;

and some brave souls learned the art of Raku, a pottery firing process from 16thC Japan.

The exhibitions displayed in the Centre during 2016 matched the programme themes for the year.

Exhibition material was researched by groups of volunteers, seeking out local knowledge, searching the Centre's archive, and collecting and displaying useful objects and memorabilia for the display cabinets. These planning groups chose the topics for each panel and decided on the words and images. Then Lenisa Noakes enhanced the images and designed each panel. Finally, the 'hanging team' was responsible for taking down the previous display, assembling and mounting the panels on the walls, and organising the display cases. At the end of each theme period, printed and electronic versions of all panels were added to the Centre's archive.

Some of our visitors are amazed when we explain that all our exhibitions are put together by volunteers with no paid input.

The Washburn Archive

The Washburn Centre Archive was set up in 2012 and contains over 6,000 catalogued items. We have a wealth of information about the valley ranging from photographs, newspaper clippings and documents to family histories and our extensive oral history film archive. We now have 18 donated collections of material, as well as the major Fewston Assemblage collection of images and archaeological reports.

Work on the Archive has been ably assisted by a dedicated group of Archive volunteers who have catalogued and rehoused the David Alred collection in acid-free wallets and folders. This collection containing over 2,000 images of the Washburn Valley has also been digitised, and the digital images are being linked to the electronic catalogue. We are also in the process of digitising the Paul Towers Collection. In 2016 we had 16 enquiries regarding the archive through the website. We decided to increase the group of Archive volunteers through holding training sessions in January 2017, and to promote public awareness and access to the archive.

The Fewston Assemblage

The Fewston Assemblage is the name given to the sets of skeletal remains and artefacts which had to be moved to enable the Centre to be built.

The Fewston Assemblage project, funded by HLF, began in Autumn 2014 and continued to progress throughout 2016. The team of volunteer researchers worked diligently and enthusiastically to discover more about the lives of the 154 Assemblage individuals. Meanwhile our osteoarchaeology colleagues from Durham and York worked on the toenails, teeth, hair and bones to see what could be found out through scientific analysis.

In September, when the research was complete, the Assemblage was reburied to the north of the church. A very moving service of commemoration was held on a gloriously sunny day.

We were very grateful to the Liz and Terry Bramall Foundation which provided funding for two facial reconstructions from Liverpool John Moores University, the same organisation which completed reconstructions of Richard III and Robert the Bruce.

The project is on target to be completed by April 2017. A booklet, film, exhibition and series of guided walks will be available to explain the findings from the research work undertaken.

10 The tea-room and catering

Our tea room continues to be popular with walkers, cyclists and families. On some weekends we have over 250 visitors who manage to eat all the many delicious cakes our volunteers provide. Surprisingly, a fine winter's day can be even busier than a sunny Sunday in August. In 2016 we had approximately 10,600 weekend visitors, meaning that since we opened in 2011, we have had over 60,000 visits.

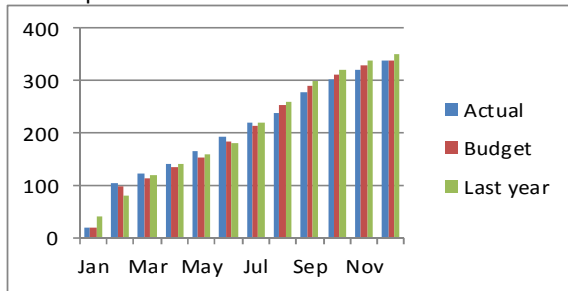
We try to keep our standards high, and this has resulted in us retaining our 5 star food hygiene award from Harrogate Borough Council. Thirteen of our volunteers took the level 2 food safety examination – and all passed (you could hear the sigh of relief from Otley!)

We continue to be booked by a range of groups, for example wedding anniversaries, birthday parties, Golden Wedding celebrations, team away days, Church meetings, WI suppers and so on. There were 15 such bookings in 2016. The comments we receive are all so positive – lovely service, great food and wonderful surroundings.

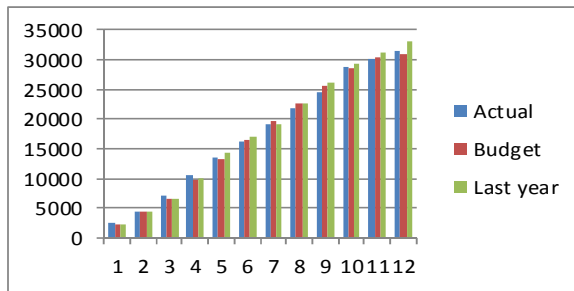
11 How did it go?

One way we measure how we are doing is by comparing what we have done against what we said we would do. Each month, at the WHCMC meetings, we review our performance using easy to read graphs. Below are the ones that give the picture for the whole of 2016.

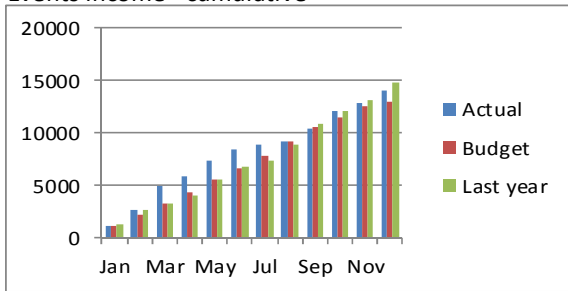
Subscription renewals -cumulative



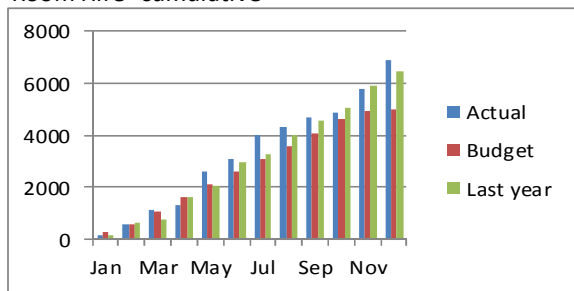
Tea room Income - cumulative



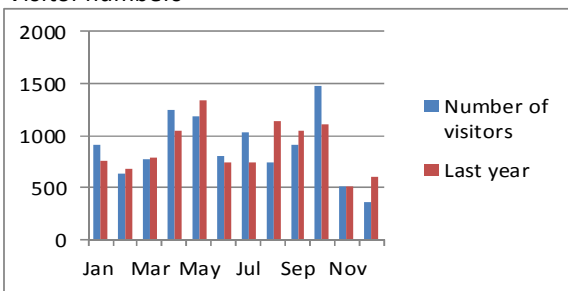
Events Income - cumulative



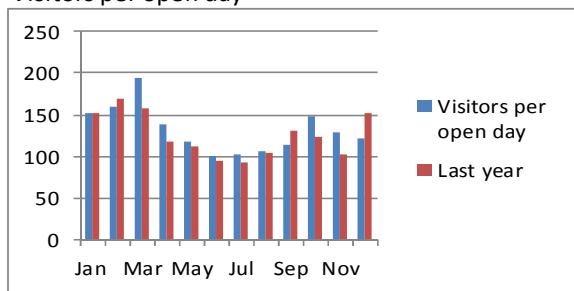
Room Hire- cumulative



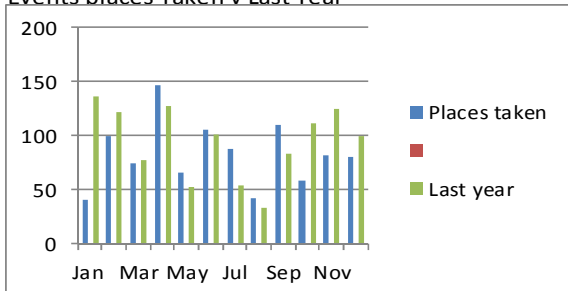
Visitor numbers



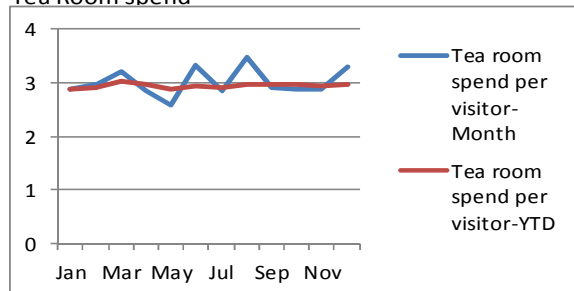
Visitors per open day



Events places Taken v Last Year



Tea Room spend



12 Staffing

Although the Centre is primarily run and managed by volunteers, we do need some paid support. It would be a step too far to expect the volunteer team to take on the administrative role which the Centre Co-ordinator performs. We were sorry that Rachel Batchelor left in September after being with us for over 3 years, but in this time she put the Centre on a firm administrative footing and established many of our systems and procedures. In September Jo Parish took the role on a temporary basis, whilst we found a permanent replacement for Rachel. Jo quickly got to grips with our various rotas and routines, and her cheerful manner was much appreciated. Early in 2017 we welcomed Michelle Metcalfe into the permanent post and she too has learnt a great deal in a short space of time.

Gillian Waters has continued to be our paid archivist, and again without Gillian's help our archive would not have developed in the way it has. She has taught some of us new skills and through the archive she has provided an important legacy of the Centre.

In 2016 we decided to have our cleaning done by a commercial cleaning company 'It's Clean' – and Frank, who is our regular cleaner, keeps us sparkling and shipshape.

13 Publicity and Marketing

When we ask visitors how they found out about the Centre, they frequently say that a friend told them about it and said they must visit. This word of mouth publicity is something we are pleased with, but we should not take it for granted. We have to continue to make sure that people are happy with what we provide and therefore want to recommend us.

Against this background, we have improved the quality of information to our members and supporters through regular illustrated newsletters. In addition, we have designed and printed a new membership brochure in the house style we use for our events programme leaflets.

In keeping with modern times we continue to promote the Centre through Facebook and have 287 'likes'. We are also regular tweeters and have 459 followers. More traditionally though, we are asked to visit other organisations to give a 'talk' about how the Centre came about and how we run it. This is a really good opportunity to promote what we do and has the added benefit of reaching new audiences. In 2016 we have addressed meetings of Ilkley Rotary Club, Harrogate Vision Support Centre and Kettleasing and Burley in Wharfedale ladies' groups.

We have completed the first major update of our new website (www.washburnvalley.org) which reflects what the Centre has to offer and gives updates on our programmes and other heritage activities. The main changes include separate pages for our Exhibitions and for the Fewston Assemblage Project which we call 'Churchyard Secrets'.

We also regularly promote our events in the press - we seem to be more successful with the Otley and Ilkley papers than we are with the Harrogate and Knaresborough ones. Events are also advertised in the Centre and of course through our programme leaflets which are produced professionally by the Flyer Expert.

We believe there will be other opportunities over the coming year to promote the work of the Centre, particularly the Fewston Assemblage Project and the Washburn Archive.

14 Conclusion

In 2016 the Centre continued to develop and expand its operation. New volunteers were recruited, our programme was again attractive and wide ranging, we improved the premises and equipment – and our cakes continued to receive loud applause!

Sally Robinson, Chair

On behalf of the WHCMC

Washburn and 'Trading' Accounts 2016

	Washburn £	Trading £	Combined £
Income			
Washburn Society	17,343	0	17,343
Grants	30,120	0	30,120
Donations	595	0	595
Gift Aid recovered	785	0	785
Sundry	1,022	365	1,387
Interest	0	0	0
Catering	49	31,453	31,502
Room hire	1,921	4,972	6,893
	<u>51,835</u>	<u>36,790</u>	<u>88,625</u>
Expenditure			
Washburn Society	5,449	0	5,449
Centre Manager	14,143	0	14,143
Overheads	55,593	0	55,593
Catering	0	6,453	6,453
Audit	0	630	630
Bank charges	0	393	393
Insurance	629	0	629
Sundry	0	17	17
	<u>75,814</u>	<u>7,493</u>	<u>83,307</u>
Surplus/(deficit)	-23,979	29,297	5,318
Gift Aid Rcd/paid from Trading	25,500	-25,500	0
Net movement	1,521	3,797	5,318
Op/Bal			
Current Account	70,774	3,361	74,135
Deposit Account	0	0	0
	<u>70,774</u>	<u>3,361</u>	<u>74,135</u>
			0
Cl/Bal			
Current Account	72,295	7,158	79,453
Deposit Account	0	0	0
	<u>72,295</u>	<u>7,158</u>	<u>79,453</u>
Net movement	1,521	3,797	5,318

Note

Washburn overheads include

Heritage Grant Expenditure	£18,180
Computer equipment	£3,357
Fridge	£552
Dishwasher (deposit)	£1,489
Car park alterations	£8,527

Appendix 2

2016 Volunteer lists

	Bakers	Tea room and caterers	Heritage Wardens	Walk Wardens	Committee Member	Advisor	Archive Team	Programmes Team	Website and publicity team	Fewston Assemblage Team
1	Alison Bowers	Alison Bowers	Andy Campbell	Andy Campbell	Cheri Beaumont	Diana Parsons	Anne Lister	Alison Bowers	Elaine Stead	Ann Lister
2	Ann Johnson	Ann Johnson	Ann Johnson	Ann Johnson	Clive Robinson	Graham Shield	Britta Heyworth	Andrew Campbell	John Crowther	Britta Heyworth
3	Annette Dinsdale	Britta Heyworth	Cheri Beaumont	Chris Goodall	Elaine Stead	Michael Cleverley	Clive Robinson	Andrew McTominey	Liz Carnell	Cath Monaghan
4	Britta Heyworth	Catriona Cleverley	Clive Robinson	Clive Robinson	Ian Bergel		Deborah Power	Ann Johnson	Robin Noakes	Chris Goodall
5	Catriona Cleverley	Cheri Beaumont	David Fox	David Fox	John Crowther		Elaine Stead	Britta Heyworth	Sue Appleyard	Clive Robinson
6	Cheri Beaumont	Claire Tate	Gill White	Heather Burrow	John Charman		Gillian Waters	Cheri Beaumont		Deborah Power
7	Christine Hobson	Clive Robinson	Heather Burrow	Jane Austick	Pat Anderson		Jane Austick	Chris Ryder		Jane Austick
8	Claire Tate	Cynthia Petty	Ian Brand	Janet Fox	Philip Livesey		Jane Winn	Christine Hobson		Janet Fox
9	Cynthia Petty	Daphne Wilson	Jane Austick	Pat Anderson	Rebecca Campbell		Janet Fox	Christine Pearce		Ken Fackrell
10	Cyril Wilkinson	Di Oldam	Janet Fox	Rebecca Campbell	Robin Noakes		Jo Parish	Christine Ryder		Margaret Hart
11	Daphne Wilson	Elaine Stead	Janet Sharpe	Robin Noakes	Sally Robinson		Margaret Hart	Clive Robinson		Martin Monaghan
12	Di Oldam	Evie Chandler	Joan Fox	Sally Robinson	Simon Hill		Mikki French	Cyril Wilkinson		Maureen Fackrell
13	Dorothy	Gill White	Pat	Tom Cox	Tom Cox		Pat	Daphne		Mikki

	Hick		Anderson				Anderson	Wilson		French
14	Elaine Stead	Gill Carlile	Peter Johnson				Philip Livesey	David Acomb		Pat Anderson
15	Gill Mansion	Gill Mansion	Philip Herbert				Sally Robinson	David Fox		Sally Robinson
16	Gill White	Gladys Spence	Philip Livesey					Doug Middleton		Sion Caffell
17	Gladys Spence	Henrietta Ryott	Rebecca Campbell					Elaine Stead		Stephanie Neal
18	Helen Williams	Huw Roberts	Robin Noakes					Gill White		Gillian Waters
19	Henrietta Ryott	Ian Brand	Sally Robinson					Heather Burrow		
20	Jacqui Botham	Jacqui Botham	Tom Cox					Ian Bergel		
21	Jane Austick	Jane Austick						Ivor Drake		
22	Jane Charman	Jane Winn						Jane Austick		
23	Janet Ryder	Janet Fox						Janet Sharpe		
24	Jean Petty	Janet Ryder						Janet Fox		
25	Jennifer Rundle	Jean Matthewman						Janet Ryder		
26	Jill Cox	Jennifer Rundle						Janice Scott		
27	John Charman	Jill Cox						Jean Petty		
28	Kath Dinsdale	Jo Parish						Jill Cox		
29	Kath Murrie	Kath Dinsdale						Jim Brophy		
30	Liz Wilson	Kath Murrie						Jo Parish		
31	Maureen Fackrell	Lee Heyworth						Joan Gibson		

32	Pamela Holliday	Liz Wilson						John Crowther		
33	Pat Anderson	Liz Smith						John Hobson		
34	Rebecca Campbell	Pat Anderson						John Charman		
35	Sally Robinson	Peter Johnson						Kath Mitchell		
36	Sue Appleyard	Philip Livesey						Kath Dinsdale		
37	Sue Roberts	Rachel Brown						Ken Fackrell		
38		Rebecca Campbell						Lenisa Noakes		
39		Robin Noakes						Liz Carnell		
40		Sally Robinson						Michael Ellison		
41		Sue Appleyard						Mikki French		
42		Sue Roberts						Olwen Middleton		
43		Sue Horner						Pat Anderson		
44		Tom Cox						Peter Beaumont		
45								Rebecca Campbell		
46								Robin Noakes		
47								Sally Robinson		
48								Sharelle Henderson		

